



## Ecosmart Pool and Spa Heaters

### Sizing Information

Ecosmart pool and spa heaters are intended to be used on an “on demand” basis. The Temperature Rise Method is most helpful to determine how long it will take your pool or spa to heat to your desired temperature.

First determine how many total gallons are in the pool or spa using the following calculations:



(Length Across<sup>2</sup>) x 0.7854 x Depth x 7.5



Length x Width x Depth x 7.5

This gives you the total Volume (V) of your pool or spa. This information can be used to look up the amount of time it will take to heat your pool or spa by the specified temperature on the charts below.

SPA Size									
Gallons	200	300	400	500	600	700	800	900	1000
Minutes to raise SPA temperature 15°F									
SPA 5.5	80	120	160	200	240	280	320	360	400
SPA 11	40	60	80	100	120	140	160	180	200

SPA Size									
Gallons	200	300	400	500	600	700	800	900	1000
Minutes to raise SPA temperature 20°F									
SPA 5.5	107	160	213	267	320	373	427	480	533
SPA 11	53	80	107	133	160	187	213	240	267

SPA Size									
Gallons	200	300	400	500	600	700	800	900	1000
Minutes to raise SPA temperature 25°F									
SPA 5.5	133	200	267	333	400	467	533	600	667
SPA 11	67	100	133	167	200	233	267	300	333

SPA Size									
Gallons	200	300	400	500	600	700	800	900	1000
Minutes to raise SPA temperature 30°F									
SPA 5.5	160	240	320	400	480	560	640	720	800
SPA 11	80	120	160	200	240	280	320	360	400

POOL Size					
Gallons	11000	12000	13000	14000	15000
Hours to raise POOL temperature 5°F					
POOL 18	7.5	8	8.75	9.5	10.25
POOL 27	5	5.5	6	6.5	7

POOL Size					
Gallons	11000	12000	13000	14000	15000
Hours to raise POOL temperature 10°F					
POOL 18	15	16	17.5	18.75	20.5
POOL 27	10	11	12	12.5	13.5

POOL Size					
Gallons	11000	12000	13000	14000	15000
Hours to raise POOL temperature 15°F					
POOL 18	22	24	26	28	30.5
POOL 27	15	16	17.5	18.75	20.25

POOL Size					
Gallons	11000	12000	13000	14000	15000
Hours to raise POOL temperature 20°F					
POOL 18	30	32	35	37.75	41
POOL 27	20	22	23.5	25	27

\*\*Times do not account for heat loss - actual heat up times may vary.

# eco SMART



**SMART POOL 18**   **SMART SPA 5.5**  
**SMART POOL 27**   **SMART SPA 11**

**Flow Sensor Activated**

**Digital Temperature Control**

**Remote Control Compatible**

**Compact & Quiet Design**

**Stainless Steel Elements & Exchanger**

**Easy to Install**

# SPA & POOL HEATING ON DEMAND





# Electric Spa & Pool Heaters

## Smart SPA | Smart POOL Series

Ecosmart Spa and Pool Heaters operate by utilizing the latest flow sensor technology instead of the traditional pressure switch activation, which increases its reliability and longevity. The Smart Heater series come with digital thermostat control so you can set the temperature exactly where you want.

### Power Specifications

Model	Voltage	Phase	kW	Equivalent BTU	Max Amps	Plumbing Connection	Dimensions H" x W" x D"	Weight
Smart SPA 5.5	220-240	Single	5.5	18,750	25	1.5"	12 x 10.5 x 4.75	14.25
Smart SPA 11	220-240	Single	11	37,560	50	1.5"	12 x 10.5 x 4.75	14.25
Smart POOL 18	240	Single	18	61,000	75	2"	17 x 14 x 5.5	24.25
Smart POOL 27	240	Single	27	92,000	112.5	2"	17 x 14 x 5.5	24.25

### Basic Sizing Information

Model	Spa/Pool Size W' x L' x D'	Gallons	Recommended Ecosmart Heater	Max. Gallons
Smart SPA 5.5	6'8" Octagon	300	Smart SPA 5.5	400
Smart SPA 11	8' Octagon	500	Smart SPA 11	1000
Smart POOL 18	12 x 24 x 5	10,800	Smart POOL 18	11,000
Smart POOL 27	14 x 28 x 5	14,700	Smart POOL 27	15,000



Remote Control Compatible



### Product Features

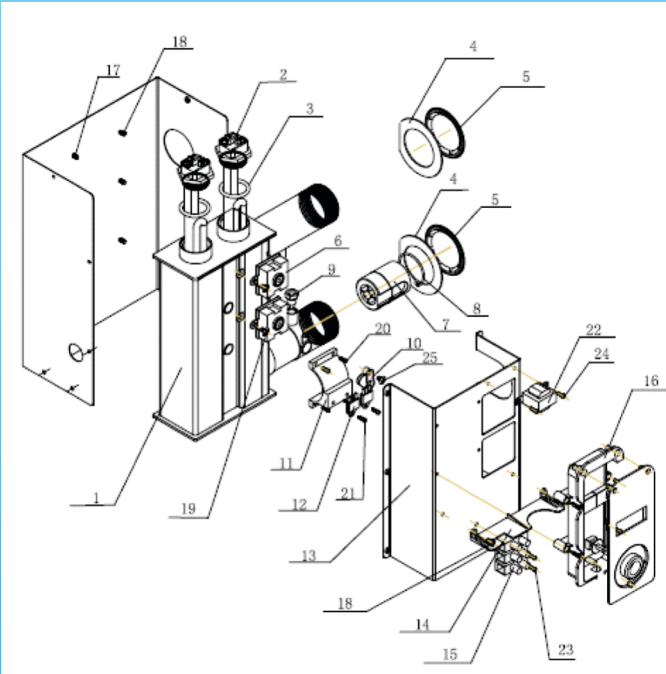
- Stainless Steel Elements with 3/16" Brass Heads
- Stainless Steel Heat Exchanger
- NO Relays or Contactors. Flow sensor Activation with microprocessing technology.
- Resettable Thermostats.
- Exceeds standard efficiency ratings.



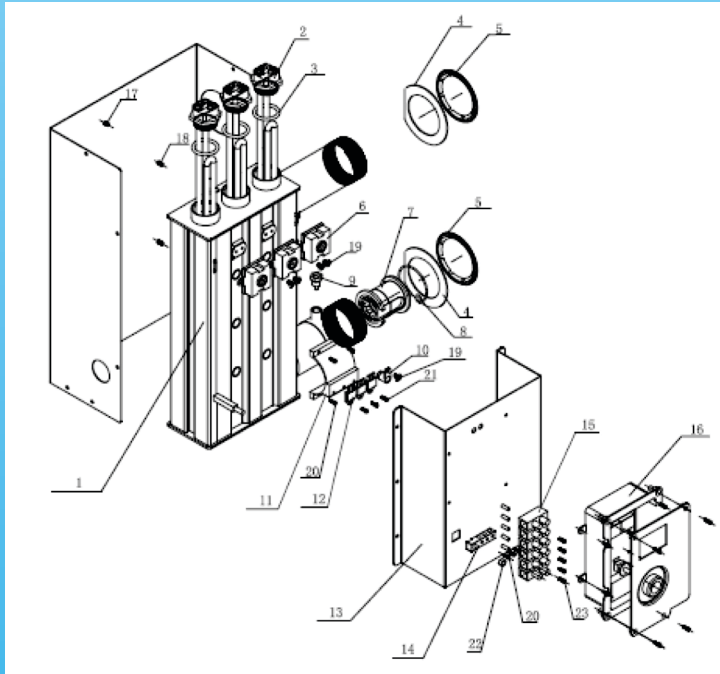
# Electric Spa & Pool Heaters

## Parts Diagram

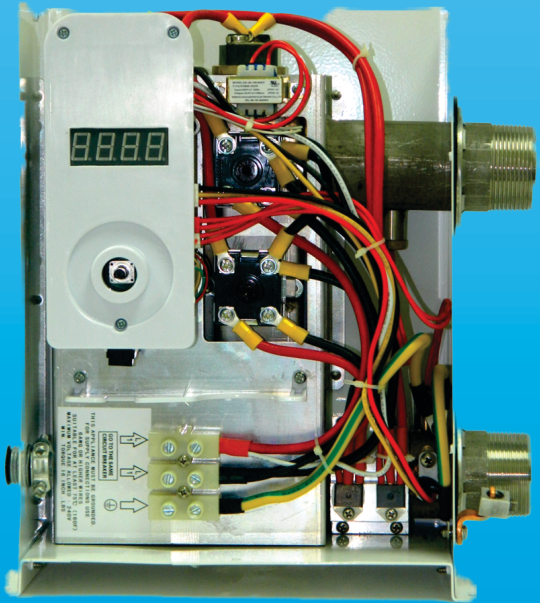
Smart SPA 11



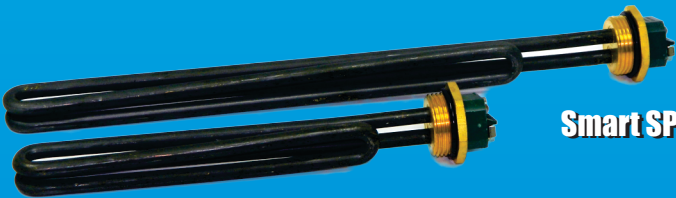
Smart POOL 27



1	Heat Exchanger	12	Triac
2	Heating Elements	13	Aluminum Bracket
3	Gasket Rings	14	Ground Terminal Block
4	Inlet / Outlet Gasket	15	Terminal Block
5	Inlet / Outlet Fitting	16	Circuit Board Holder
6	Thermostats	17	Stainless Steel Screw M 4x12
7	Flow Sensor	18	Stainless Steel Screw M 4x10
8	Flow Sensor Fitting	19	Stainless Steel Screw M 4x6
9	Thermistor	20	Stainless Steel Screw M 4x10
10	Flow Sensor/Hall Effect	21	Stainless Steel Screw M 4x8
11	Cooling Plate		



Interior View of Smart SPA 11



Smart POOL Heaters | 9 kW @ 240 Volt Elements

Smart SPA Heaters | 5.5 kW @ 220 Volt Elements