

## INDUSTRIAL DEHUMIDIFIERS

### HEAVY DUTY DEHUMIDIFIERS

MODELS: GDC124CS, GDC124CSS

### LIGHT DUTY DEHUMIDIFIER

MODEL: GD55S

#### GDC124CS, GDC124CSS

- Automatic condensate pump with 15ft. vertical lift
- On demand pump purge switch, hour meter, and illuminated On/Off switch
- Painted steel cabinet (stainless steel on GDC124CSS) has an access panel for cleaning coils, and power cord storage

#### GD55S

- 2-speed fan, humidistat, overflow protection with indicator light
- Painted steel cabinet with fold-down handle and 4 casters



GDC124CS, GDC124CSS



Stackable for Easy Portability



GD55S

### WARRANTIES

- One year parts and labor warranty
- Six year condenser & coils warranty

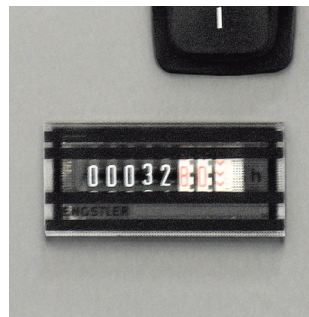
### GDC SERIES HEAVY DUTY DEHUMIDIFIER FEATURES



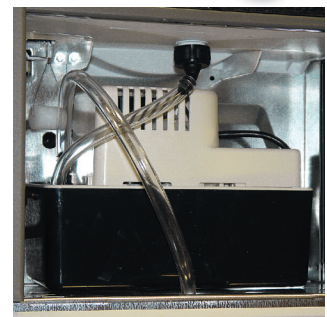
Hot Gas Defrost On-Demand Switch



Pump Purge On-Demand Switch



Hour Counter



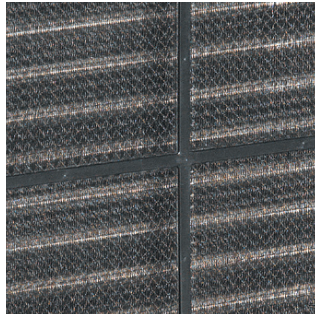
Built-In Condensate Pump

# INDUSTRIAL DEHUMIDIFIERS

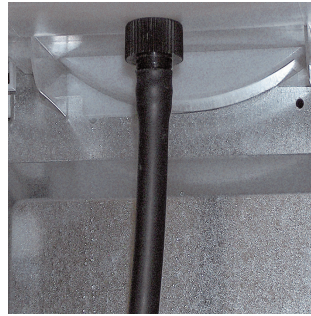
## GDC SERIES LIGHT DUTY DEHUMIDIFIER FEATURES



**2 Speed Fan, "Bucket Full" Light, Adjustable Humidistat**



**Rugged Washable Air Filter**



**Hose Attachment**



**Removable Water Bucket**

MODEL	GDC124CS	GDC124CSS	GD55S
<b>CAPACITY</b>			
Capacity at Saturation	124 pints	124 pints	101.2 pints
Capacity 80°F, 60% RH	60 pints	60 pints	52.8 pints
<b>TECHNICAL</b>			
Refrigerant Type/Refrigerant Charge	R410A/12 ounces	R410A/12 ounces	R410A/12 ounces
Compressor Type	Rotary	Rotary	Rotary
Defrost Type	Hot Gas/Temperature Sensed	Hot Gas/Temperature Sensed	Timer
Temperature Range	40°F - 95°F	40°F - 95°F	40°F - 95°F
Volts	115 V	115 V	115 V
Hertz	60 Hz	60 Hz	60 Hz
Amperage	5.9 A	5.9 A	5.0 A
Air Flow	235 CFM	235 CFM	325 CFM
<b>DIMENSIONS</b>			
Height	36.6 in.	36.6 in.	20.9 in.
Depth	23.8 in.	23.8 in.	17.9 in.
Width	21.9 in.	21.9 in.	13.5 in.
Weight	90 lbs.	90 lbs.	50 lbs.
<b>FEATURES</b>			
Cabinet	Heavy Duty Steel	Stainless Steel	Steel
Color	Grey/ Black	Grey/ Black	Black
Transportable	Yes	Yes	4 casters
Stackable	Yes	Yes	No
Enclosed Cord Storage	Yes	Yes	No
Hour Counter	Yes	Yes	No
Handle Type	Dual	Dual	Fold Down
Fan Speeds	1	1	2
Humidistat	No	No	Adjustable
Bucket Capacity	N/A	N/A	21 pints
Built in Condensate Pump	Yes (20 ft. lift)	Yes (20 ft. lift)	No
Cleanable Air Filter	Yes	Yes	Yes
Drainage Hose	20 feet	20 feet	20 feet
<b>WARRANTY</b>			
1 Year Parts and Labor	Yes	Yes	Yes
Six Year Condenser & Coils	Yes	Yes	Yes
<b>APPROVALS</b>			
IPX Rating	IPX 2	IPX 2	N/A
Safety Listing	cCSAus	cCSAus	cCSAus



**United States** 10048 Industrial Blvd. • Lenexa, KS 66215 • 1.800.747.1762 • www.fantech.net  
**Canada** 50 Kanalfakt Way • Bouctouche, NB E4S 3M5 • 1.800.565.3548 • www.fantech.net

Item #: 413528  
 Rev Date: 062210

Fantech, reserves the right to modify, at any time and without notice, any or all of its products' features, designs, components and specifications to maintain their technological leadership position.